

Intercompany Integration Solution for SAP Business One

Provides a common frame of reference for analyzing the performance of a business unit, interpreting reports from two different subsidiaries

Growing organizations that control more than one legal business entity are sometimes faced with the challenge of how to share data between partner companies.

Master data such as item masters and business partner master data should be in sync across all organizations, so that the same data is used across the companies. This establishes a common language among business entities for intercompany transactions. It also provides a common frame of reference for analyzing the performance of a business unit, interpreting reports from two different subsidiaries, and gaining a consolidated view such as aggregate spend or inventory holdings across all operations. Having common master data eliminates the manual effort associated with aggregating data across your organizations.

Intercompany integration solution ensures that the master data being used across the companies is consistent.

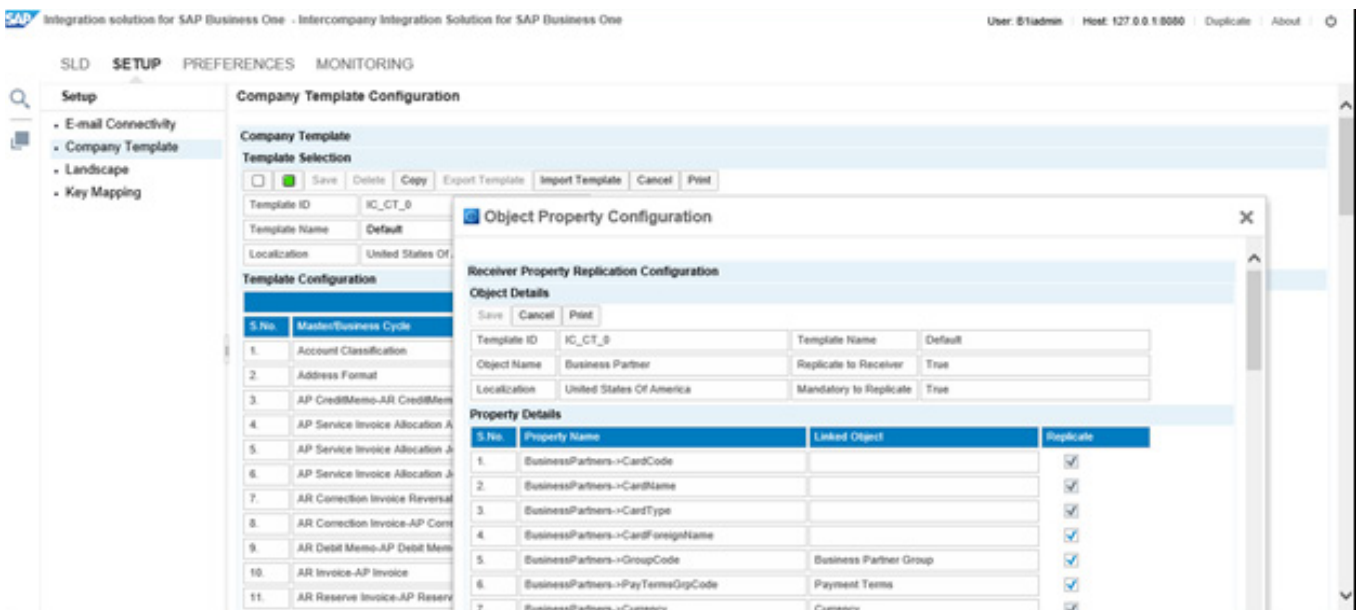
The intercompany solution supports the replication of essential master data across partner companies such as Freight Master, Currency Master, Payment Terms, Item Master Data, Business Partner Master Data, etc.

Flexible Replication of Master Data

Intercompany solution provides the flexibility in master data replication. User can decide the masters and their fields that are to be replicated across Partners Companies.

Company Template Configuration

With the Company Template configuration, user can specify the master(s) that needs to be sent from one company to the others. For each master, user can also specify the field list to be replicated between the SAP Business One Companies.



Intercompany Integration Solution for SAP Business One

Provides a common frame of reference for analyzing the performance of a business unit, interpreting reports from two different subsidiaries

Selective Replication

For item master data, business partner master data, bill of materials and price list masters, the user can choose which specific records are to be shared between SAP Business One companies.

Item Master Data form showing fields for Item No., Description, Foreign Name, Item Type, Item Group, UoM Group, Price List, and various checkboxes like 'Inventory Item', 'Sales Item', and 'Purchase Item'. The 'Global Business Partner' checkbox is highlighted in red.

Business Partner Master Data form showing fields for Code, Name, Foreign Name, Group, Currency, Federal Tax ID, and various checkboxes like 'Active', 'Inactive', and 'Advanced'. The 'Global Business Partner' checkbox is highlighted in red.

Global Data Distribution

Users can define data distribution templates to replicate specific global business partners, global item masters, global bill of materials, and global price lists to specific branch companies.

Global Data Distribution dialog box showing 'Distribution Template Code' as CA-NY and 'Object' as Item. A list of branches is visible with checkboxes for selection.

Global Data Distribution dialog box showing 'Distribution Template Code' as CA-NY and 'Object' as Business Partner. A list of branches is visible with checkboxes for selection.

Global Data Authorization

Global data administration allows administrators to define users who will be allowed to add, update, or remove global master data.

User Name	Master	Add	Update	Remove
Jayson Butler	Item	<input checked="" type="checkbox"/>	<input checked="" type="checkbox"/>	<input type="checkbox"/>
Bill Levine	Business Partner	<input checked="" type="checkbox"/>	<input checked="" type="checkbox"/>	<input type="checkbox"/>
Sophie Klogg	Bill Of Material	<input checked="" type="checkbox"/>	<input checked="" type="checkbox"/>	<input type="checkbox"/>
Brad Thompson	Price list	<input checked="" type="checkbox"/>	<input checked="" type="checkbox"/>	<input type="checkbox"/>
Jim Boswick				
Bob Shone				
John Peterson				
Linda Hudson				
Donna Brown				
Tom Brady				
Doris Labour				
Michael Spear				
Fred Buyer				
James Chan				
Bill				

Intercompany Integration Solution for SAP Business One

Provides a common frame of reference for analyzing the performance of a business unit, interpreting reports from two different subsidiaries

Master Data Supported For Replication

By default intercompany solution replicates following masters in all localizations of SAP Business One.

Master Data	
Freight	County
Currencies	Dimensions
Customer Group	Profit Center Setup
Vendor Group	Distribution Rules Setup
Item Group	Profit Center Type
Price Lists	Contract Templates
Period and Volume Discount	Item Master Data
Special Prices for Business Partners	Business Partner Master Data
Discount Groups	Bill of Materials
Exchange Rates	Customer Equipment Card
Length and Width UOM	Service Contract
Weight UOM	Manufacturers
Account Classification	Item Property
Payment terms	Projects
Cash Discount	Unit of Measure Groups
Countries	Units of Measure
States	Package Types

User can use company template configuration feature to replicate following additional masters

Master Data	
Shipping Type	Portfolio
Credit Cards	Instruction
Business Partner Priorities	Indicators
Business Partner Properties	Banks
Bank Charges Allocation Code	House Bank Accounts
Service Codes	Fuel Group

Intercompany Integration Solution for SAP Business One

Provides a common frame of reference for analyzing the performance of a business unit, interpreting reports from two different subsidiaries

Master Data	
Customs Group	Beverage Commercial Brand
Payment Blocks	Fuel Code
Material Group	Beverage Group
Address Format	Beverage Table
NCM Code	Beverage Combination
DNF Code	Name
Service Group	Income Nature Setup
Dunning Terms	SPED Profile Setup
Holiday Dates	Occurrence Code
Sales Person	Movement Code
Commission Groups	CNAE Code
Language	Product Source Codes
Payment Methods	Translation
File Format	Industry
Document Type	E-Mail Group

Business Benefits

- Improvement in quality and accuracy of data
- Increase productivity by reduction in workload
- Overall increase in organizational efficiencies
- Minimize errors in master data entry across the organization